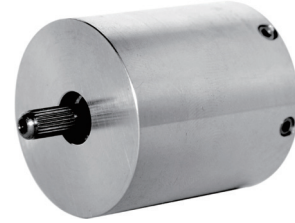


28BYA Series

General Specification

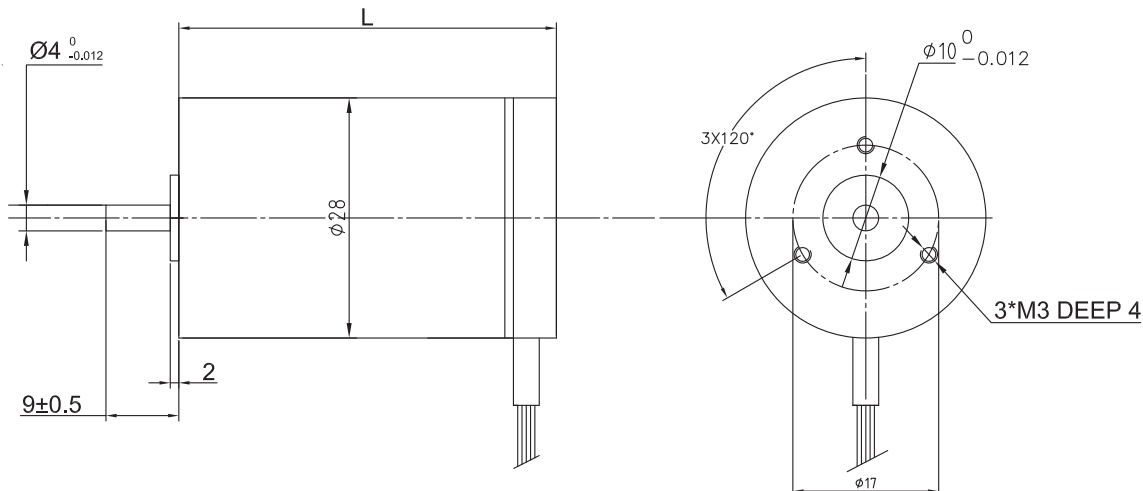
Winding type 绕组连接方式	YWE
Hall effect angle 霍尔分布角度	120 Deg. Electrical angle
Radial play 径向间隙	0.02mm /450g
End play 轴向间隙	0.08mm /450g
Max. radial force 径向最大承受力	15N(10mm from the flange)
Max. axial force 轴向最大承受力	10N
Insulation class 绝缘等级	B
Dielectric strength 介电强度	500VDC for one minute,5mA
Insulation resistance 绝缘电阻	50M Ω min., 500VDC



Performance Data

Model 型号	Units	28BYA026A080X-01	28BYA038B031X-01	28BYA077B031X-01
Number of poles 极数			4	
Number of phase 相数			3	
Rated voltage 额定电压	VDC	15	24	24
Rated speed 额定转速	RPM	8000	3100	3100
Continuous stall torque 持续堵转转矩	mN.m	8.4	19.2	60.00
Rated torque 额定转矩	mN.m	7	16	50.00
Rated power 额定功率	W	6	5.2	16
Peak torque 峰值扭矩	mN.m	21	48	150.00
Peak current 峰值电流	A	1.53	0.87	2.66
Torque constant 转矩常数	Nm/A	0.014	0.055	0.057
Back E.M.F 反电势	V/KRPM	1.5	5.1	5.10
Rotor inertia 转动惯量	g.cm ²	1.23	2.12	5.98
Body length 电机长度	mm	26	38	77
Voltage range 电压范围	VDC		12~36	
Speed Range 转速范围	rpm		3000~8000	
Weight 重量	Kg	0.06	0.08	0.280

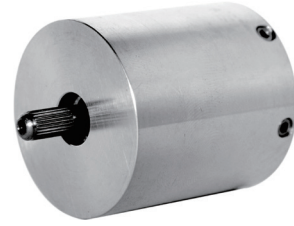
Dimensions in mm



33BYA Series

General Specification

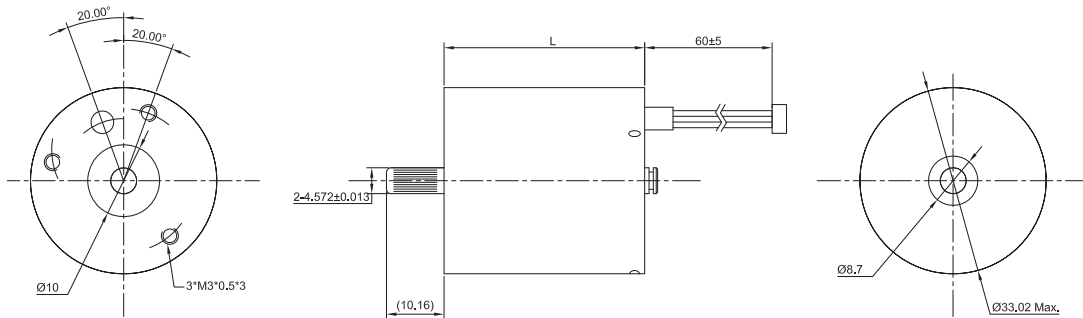
Winding type 绕组连续方式	YWE
Hall effect angle 霍尔分布角度	120 Deg. Electrical angle
Radial play 径向间隙	0.02mm /450g
End play 轴向间隙	0.08mm /450g
Max. radial force 径向最大承受力	15N (10mm from the flange)
Max. axial force 轴向最大承受力	10N
Insulation class 绝缘等级	B
Dielectric strength 介电强度	500VDC for one minute, 5mA
Insulation resistance 绝缘电阻	50M Ω min., 500VDC



Performance Data

Model 型号	Units	33BYA036B150X-01	33BYA036B200X-01	33BYA036A200X-01
Number of poles 极数			4	
Number of phase 相数			3	
Rated voltage 额定电压	VDC	24	24	12
Rated speed 额定转速	RPM	15000	20000	20000
Continuous stall torque 持续堵转转矩	mN.m	14.16	14.16	14.16
Rated torque 额定转矩	mN.m	11.8	11.8	11.8
Rated power 额定功率	W	18.5	25	25
Peak torque 峰值扭矩	N.m	35.4	35.4	35.4
Peak current 峰值电流	A	3	4.05	8.1
Torque constant 转矩常数	Nm/A	11.8×10^{-3}	9×10^{-3}	4.5×10^{-3}
Back E.M.F 反电势	V/KRPM	1.5	1.09	0.54
Rotor inertia 转动惯量	g.cm ²	2.33	2.33	2.33
Body length 电机长度	mm		36	
Voltage range 电压范围	VDC		12~24	
Speed Range 转速范围	RPM		4000~22000	
Weight 重量	Kg	0.1	0.1	0.1

Dimensions in mm



42BYA Series

General Specification

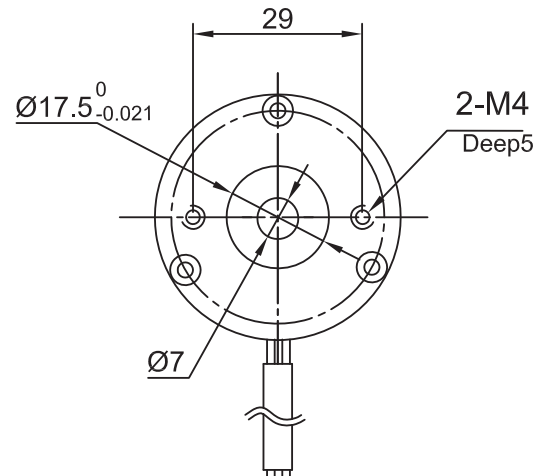
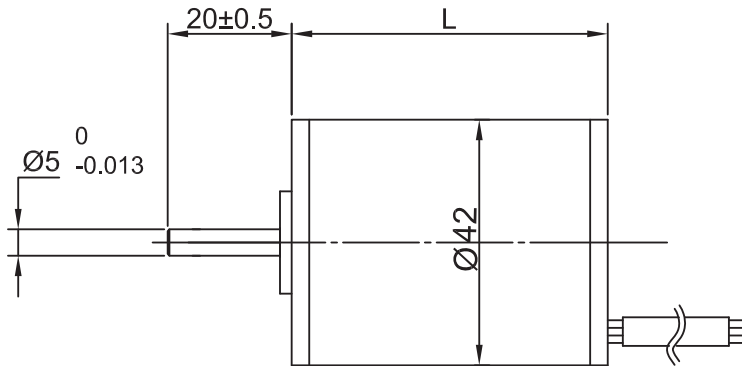
Winding type 绕组连续方式	YWE
Hall effect angle 霍尔分布角度	120 Deg. Electrical angle
Radial play 径向间隙	0.02mm /460g
End play 轴向间隙	0.02mm /400g
Max. radial force 径向最大承受力	15N(10mm from the flange)
Max. axial force 轴向最大承受力	10N
Insulation class 绝缘等级	B
Dielectric strength 介电强度	500VDC for one minute,5mA
Insulation resistance 绝缘电阻	50M Ω min., 500VDC



Performance Data

Model 型号	Units	42BYA045B 020X-01	42BYA054B 020X-01	42BYA045B 060X-01	42BYA054B 020X-01	42BYA054B 040X-01	42BYA054B 060X-01	42BYA075B 020X-01	42BYA075B 040X-01
Number of poles 极数						4			
Number of phase 相数						3			
Rated voltage 额定电压	VDC					24			
Rated speed 额定转速	RPM	2000	4000	6000	2000	4000	6000	2000	4000
Continuous stall torque 持续堵转转矩	N.m	0.048	0.048	0.048	0.096	0.096	0.096	0.192	0.192
Rated torque 额定转矩	N.m	0.04	0.04	0.04	0.08	0.08	0.08	0.16	0.16
Rated power 额定功率	W	8.4	16.75	25	21	42	63	33.5	100
Peak torque 峰值扭矩	N.m	0.12	0.12	0.12	0.25	0.25	0.25	0.45	0.45
Peak current 峰值电流	A	1.34	2.68	4	3.7	7	10.5	5.6	16.8
Torque constant 转矩常数	Nm/A	0.075	0.04	0.028	0.075	0.043	0.029	0.075	0.029
Back E.M.F 反电势	V/KRPM	8	4.6	3	8	4.6	3	8	3
Rotor inertia 转动惯量	g.cm ²	14.6	14.6	14.6	20.3	20.3	20.3	38	38
Body length 电机长度	mm	43	43	43	54	54	54	73	73
Voltage range 电压范围	VDC					24~48			
Speed Range 转速范围	RPM					2000~15000			
Weight 重量	Kg	0.37	0.37	0.37	0.46	0.46	0.46	0.63	0.63

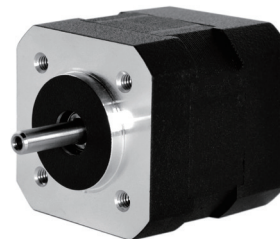
Dimensions in mm



42BSA Series (big torque)

General Specification

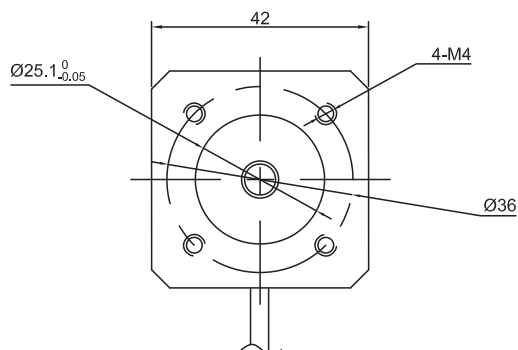
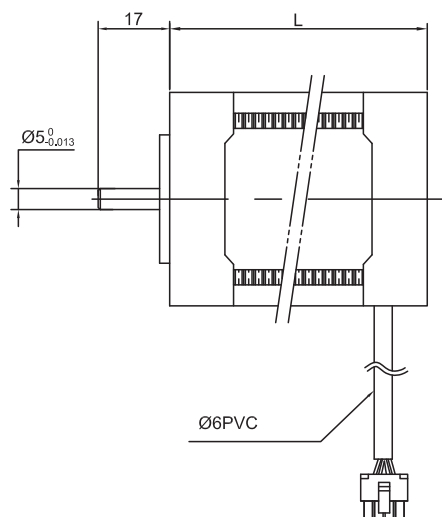
Winding type 绕组连续方式	YWE
Hall effect angle 霍尔分布角度	120 Deg. Electrical angle
Radial play 径向间隙	0.02mm /460g
End play 轴向间隙	0.02mm /400g
Max. radial force 径向最大承受力	15N (10mm from the flange)
Max. axial force 轴向最大承受力	10N
Insulation class 绝缘等级	B
Dielectric strength 介电强度	500VDC for one minute, 5mA
Insulation resistance 绝缘电阻	50M Ω min., 500VDC



Performance Data

Model 型号	Units	42BSA045B 010X-01	42BSA045B 030X-01	42BSA060B 010X-01	42BSA060B 030X-01	42BSA075B 010X-01	42BSA075B 030X-01
Number of poles 极数					8		
Number of phase 相数					3		
Rated voltage 额定电压	VDC				24		
Rated speed 额定转速	RPM	1000	3000	1000	3000	1000	3000
Continuous stall torque 持续堵转转矩	N.m	0.096	0.096	0.19	0.19	0.28	0.28
Rated torque 额定转矩	N.m	0.08	0.08	0.16	0.16	0.24	0.24
Rated power 额定功率	W	8.3	25	16.6	50	75	100
Peak torque 峰值扭矩	N.m	0.24	0.24	0.57	0.57	0.72	0.72
Peak current 峰值电流	A	1.3	3.9	2.6	7.8	11.72	15.63
Torque constant 转矩常数	Nm/A	0.162	0.06	0.162	0.06	0.03	0.045
Back E.M.F 反电势	V/KRPM	17.1	6.3	17.1	6.3	6.3	4.8
Rotor inertia 转动惯量	g.cm ²	24	24	48	48	72	72
Body length 电机长度	mm	46	46	62	62	78	78
Voltage range 电压范围	VDC				12~48		
Speed Range 转速范围	RPM				1000~4000		
Weight 重量	Kg	0.3	0.3	0.44	0.44	0.56	0.56

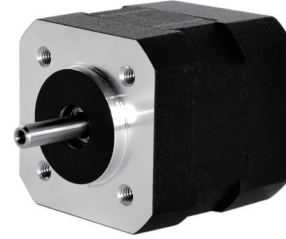
Dimensions in mm



42BSB Series

General Specification

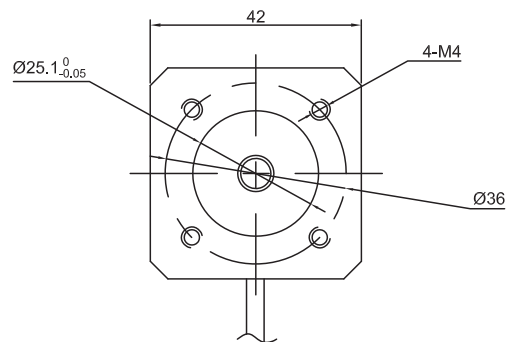
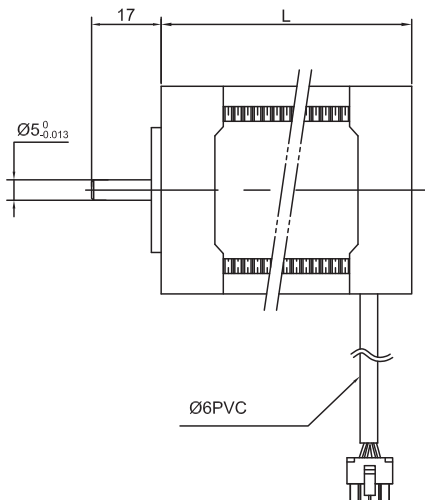
Winding type 绕组连续方式	YWE
Hall effect angle 霍尔分布角度	120 Deg. Electrical angle
Radial play 径向间隙	0.025mm /400g
End play 轴向间隙	0.025mm /400g
Max. radial force 径向最大承受力	15N (10mm from the flange)
Max. axial force 轴向最大承受力	10N
Insulation class 绝缘等级	B
Dielectric strength 介电强度	500VDC for one minute, 5mA
Insulation resistance 绝缘电阻	50M Ω min., 500VDC



Performance Data

Model 型号	Units	42BSB041B 020X-01	42BSB041B 040X-01	42BSB041B 080X-01	42BSB061B 020X-01	42BSB061B 040X-01	42BSB061B 080X-01	42BSB081B 020X-01	42BSB081B 040X-01	42BSB101B 020X-01	42BSB101B 040X-01
Number of poles 极数		8									
Number of phase 相数		3									
Rated voltage 额定电压	VDC	24									
Rated speed 额定转速	RPM	2000	4000	8000	2000	4000	8000	2000	8000	2000	4000
Continuous stall torque 持续堵转转矩	N.m	0.072	0.072	0.072	0.144	0.144	0.144	0.225	0.225	0.300	0.300
Rated torque 额定转矩	N.m	0.063	0.063	0.063	0.125	0.125	0.125	0.19	0.19	0.250	0.250
Rated power 额定功率	W	13	26	52	26	52	104	39.5	79	52.5	105.0
Peak torque 峰值转矩	N.m	0.19	0.19	0.19	0.375	0.375	0.375	0.57	0.57	0.75	0.750
Peak current 峰值电流	A	2.7	5.4	10.8	5.3	10.6	10.6	7.25	14.5	10	20.00
Torque constant 转矩常数	Nm/A	0.074	0.035	0.02	0.074	0.035	0.035	0.074	0.035	0.074	0.035
Back E.M.F 反电势	V/KRPM	7.82	3.66	2.1	7.82	3.66	3.66	7.82	3.66	7.82	3.66
Rotor inertia 转动惯量	g.cm ²	24	24	24	48	48	48	72	72	96.00	96.00
Body length 电机长度	mm	41	41	41	61	61	61	81	81	101	101
Voltage range 电压范围	VDC	12~48									
Speed Range 转速范围	RPM	2000~8000									
Weight 重量	Kg	0.3	0.3	0.3	0.45	0.45	0.45	0.6	0.6	0.80	0.80

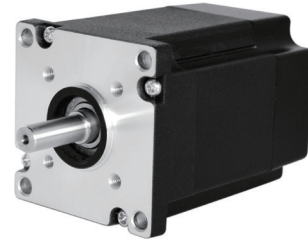
Dimensions in mm



57BSA Series (big torque)

General Specification

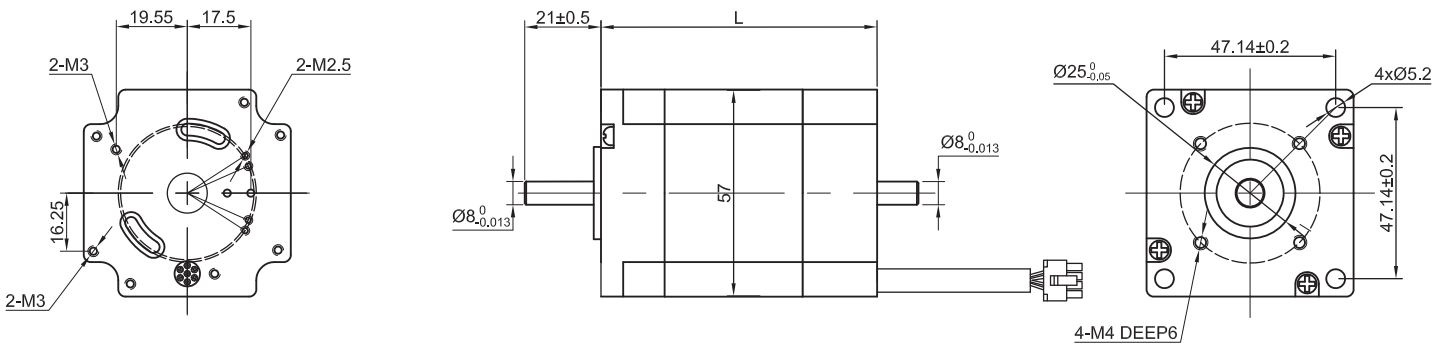
Winding type 绕组连续方式	YWE
Hall effect angle 霍尔分布角度	120 Deg. Electrical angle
Radial play 径向间隙	0.02mm /460g
End play 轴向间隙	0.02mm /400g
Max. radial force 径向最大承受力	15N(10mm from the flange)
Max. axial force 轴向最大承受力	10N
Insulation class 绝缘等级	B
Dielectric strength 介电强度	500VDC for one minute, 5mA
Insulation resistance 绝缘电阻	50M Ω min., 500VDC



Performance Data

Model 型号	Units	57BSA060B 010X-01	57BSA060B 030X-01	57BSA080B 010X-01	57BSA080B 030X-01	57BSA100B 010X-01	57BSA100B 030X-01
Number of poles 极数						8	
Number of phase 相数						3	
Rated voltage 额定电压	VDC					24	
Rated speed 额定转速	RPM	1000	3000	1000	3000	1000	3000
Continuous stall torque 持续堵转转矩	N.m	0.24	0.24	0.48	0.48	0.72	0.72
Rated torque 额定转矩	N.m	0.2	0.2	0.4	0.4	0.6	0.6
Rated power 额定功率	W	21	63	42	125	62	188
Peak torque 峰值转矩	N.m	0.6	0.6	1.2	1.2	1.8	1.8
Peak current 峰值电流	A	3.28	9.84	3.28	9.84	3.28	9.84
Torque constant 转矩常数	Nm/A	0.227	0.058	0.227	0.058	0.227	0.058
Back E.M.F 反电势	V/KRPM	24	6.1	24	6.1	24	6.1
Rotor inertia 转动惯量	g.cm ²	145	145	286	286	420	420
Body length 电机长度	mm	59	59	80	80	101	101
Voltage range 电压范围	VDC					12~80	
Speed Range 转速范围	RPM					1000~3000	
Weight 重量	Kg	0.6	0.6	1	1	1.5	1.5

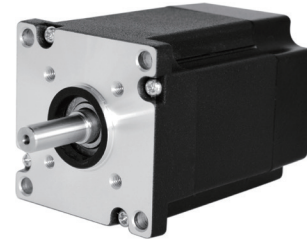
Dimensions in mm



57BSB Series(Servo Motor 伺服系列)

General Specification

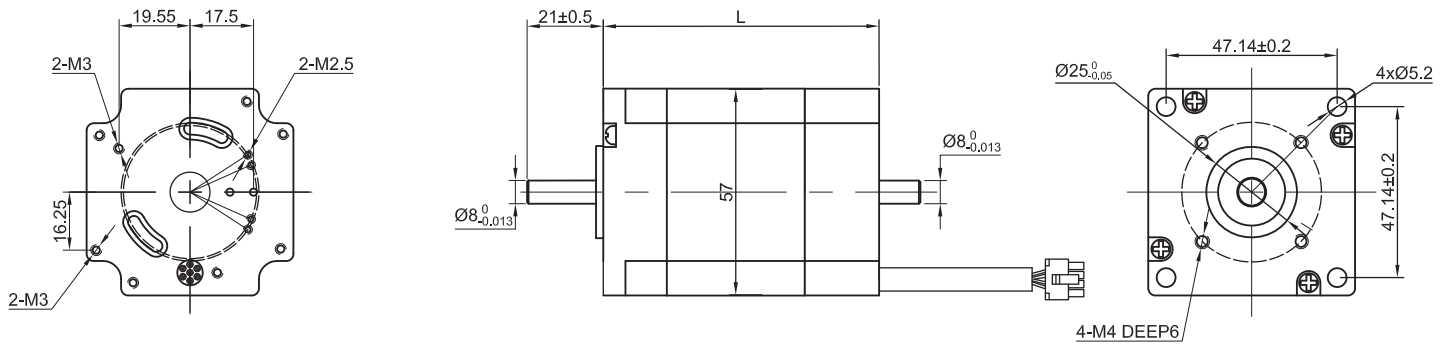
Winding type 绕组连续方式	YWE
Hall effect angle 霍尔分布角度	120 Deg. Electrical angle
Radial play 径向间隙	0.025mm /460g
End play 轴向间隙	0.025mm /400g
Max. radial force 径向最大承受力	75N(20mm from the flange)
Max. axial force 轴向最大承受力	15N
Insulation class 绝缘等级	B
Dielectric strength 介电强度	500VDC for one minute,5mA
Insulation resistance 绝缘电阻	50M Ω min., 500VDC



Performance Data

Model 型号	Units	57BSB076B 010X-01	57BSB076B 030X-01	57BSB096B 010X-01	57BSB096B 030X-01	57BSB116B 010X-01	57BSB116B 030X-01
Number of poles 极数							8
Number of phase 相数							3
Rated voltage 额定电压	VDC						24
Rated speed 额定转速	RPM	1000	3000	1000	3000	1000	3000
Continuous stall torque 持续堵转转矩	N.m	0.36	0.36	0.54	0.54	0.72	0.72
Rated torque 额定转矩	N.m	0.3	0.3	0.45	0.45	0.6	0.6
Rated power 额定功率	W	31.5	94.5	47	141	63	188
Peak torque 峰值转矩	N.m	0.9	0.9	1.35	1.35	1.8	1.8
Peak current 峰值电流	A	5.6	16.8	8.4	25.2	11.25	33.5
Torque constant 转矩常数	Nm/A	0.16	0.053	0.16	0.053	0.16	0.053
Back E.M.F 反电势	V/KRPM	13	6	13	6	13	6
Rotor inertia 转动惯量	g.cm ²	100	100	150	150	200	200
Body length 电机长度	mm	76	76	96	96	116	116
Voltage range 电压范围	VDC						12~80
Speed Range 转速范围	RPM						1000~3000
Weight 重量	Kg	0.65	0.65	0.95	0.95	1.25	1.25

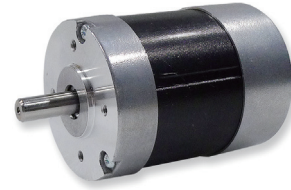
Dimensions in mm



57BYA Series (big torque)

General Specification

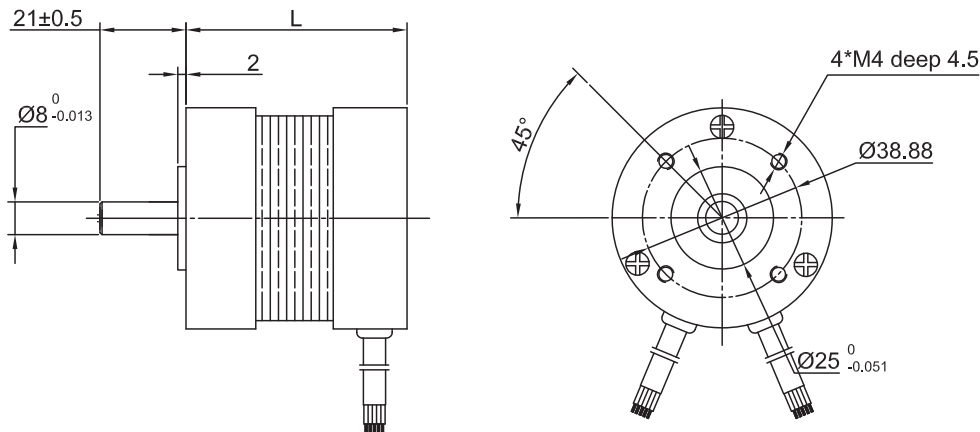
Winding type 绕组连续方式	Delta
Hall effect angle 霍尔分布角度	120 Deg. Electrical angle
Radial play 径向间隙	0.025mm /460g
End play 轴向间隙	0.025mm /400g
Max. radial force 径向最大承受力	75N(20mm from the flange)
Max. axial force 轴向最大承受力	15N
Insulation class 绝缘等级	B
Dielectric strength 介电强度	500VDC for one minute,5mA
Insulation resistance 绝缘电阻	50M Ω min., 500VDC



Performance Data

Model 型号	Units	57BYA044B 040X-01	57BYA044B 060X-01	57BYA054B 020X-01	57BYA054B 040X-01	57BYA054B 060X-01	57BYA074B 020X-01	57BYA074B 040X-01	57BYA094B 020X-01	57BYA094B 040X-01	57BYA114B 020X-01	57BYA114B 040X-01
Number of poles 极数		4										
Number of phase 相数		3										
Rated voltage 额定电压	VDC	24										
Rated speed 额定转速	RPM	4000	6000	2000	4000	6000	2000	4000	2000	4000	2000	4000
Continuous stall torque 持续堵转转矩	N.m	0.096	0.096	0.19	0.19	0.19	0.384	0.384	0.54	0.54	0.72	0.72
Rated torque 额定转矩	N.m	0.08	0.08	0.16	0.16	0.16	0.32	0.32	0.45	0.45	0.6	0.6
Rated power 额定功率	W	33.5	50	33.5	67	100.5	67	134	94	188	125	251
Peak torque 峰值转矩	N.m	0.24	0.24	0.48	0.48	0.48	0.96	0.96	1.35	1.35	1.8	1.8
Peak current 峰值电流	A	6	9	5.58	11.1	16.7	11.1	22.2	15.6	31.2	20.8	41.6
Torque constant 转矩常数	Nm/A	0.04	0.026	0.081	0.045	0.028	0.081	0.045	0.081	0.045	0.081	0.045
Back E.M.F 反电势	V/KRPM	4.8	3	8.57	4.8	3	8.57	4.8	8.57	4.8	8.57	4.8
Rotor inertia 转动惯量	g.cm ²	31	31	60.5	60.5	60.5	113	113	181.5	181.5	242	242
Body length 电机长度	mm	44	44	54	54	54	74	74	94	94	114	114
Voltage range 电压范围	VDC	12~80										
Speed Range 转速范围	RPM	2000~6000										
Weight 重量	Kg	0.25	0.25	0.5	0.5	0.5	0.75	0.75	1	1	1.25	1.25

Dimensions in mm



57BYB Series

General Specification

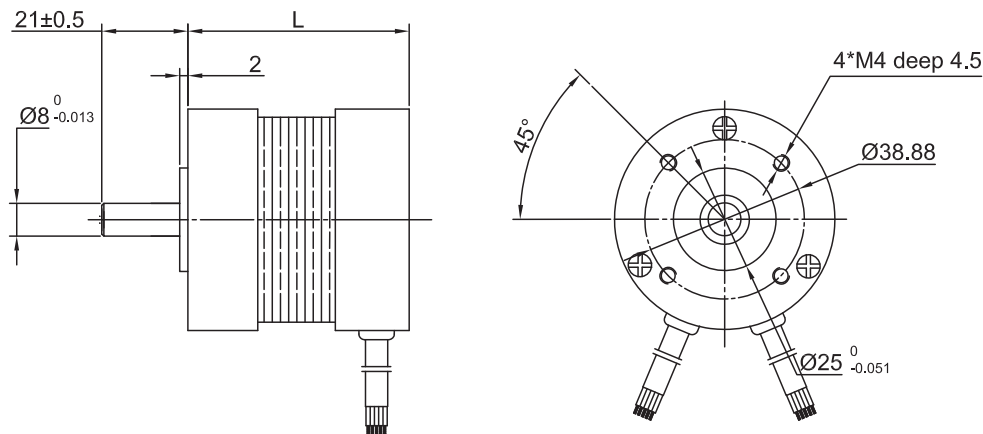
Winding type 绕组连续方式	Delta
Hall effect angle 霍尔分布角度	120 Deg. Electrical angle
Radial play 径向间隙	0.025mm /460g
End play 轴向间隙	0.025mm /4000g
Max. radial force 径向最大承受力	75N(20mm from the flange)
Max. axial force 轴向最大承受力	15N
Insulation class 绝缘等级	B
Dielectric strength 介电强度	500VDC for one minute,5mA
Insulation resistance 绝缘电阻	50M Ω min., 500VDC



Performance Data

Model 型号	Units	57BYB054B 020X-01	57BYB054B 040X-01	57BYB074B 020X-01	57BYB074B 040X-01	57BYB094B 020X-01	57BYB094B 040X-01	57BYB114B 020X-01	57BYB114B 040X-01
Number of poles 极数						4			
Number of phase 相数						3			
Rated voltage 额定电压	VDC					24			
Rated speed 额定转速	RPM	2000	4000	2000	4000	2000	4000	2000	4000
Continuous stall torque 持续堵转转矩	N.m	0.192	0.192	0.348	0.348	0.492	0.492	0.684	0.684
Rated torque 额定转矩	N.m	0.16	0.16	0.29	0.29	0.41	0.41	0.57	0.57
Rated power 额定功率	W	33.5	67	60	121	86	172	119	238
Peak torque 峰值转矩	N.m	0.48	0.48	0.87	0.87	1.23	1.23	1.71	1.71
Peak current 峰值电流	A	6	12	10.7	21.6	15.3	30.7	21.2	42.5
Torque constant 转矩常数	Nm/A	0.08	0.07	0.08	0.04	0.08	0.04	0.08	0.04
Back E.M.F 反电势	V/KRPM	8.57	4.8	8.57	4.8	8.57	4.8	8.57	4.8
Rotor inertia 转动惯量	g.cm ²	75	75	119	119	173	173	230	230
Body length 电机长度	mm	82.5	82.5	102.5	102.5	122.5	122.5	142.5	142.5
Voltage range 电压范围	VDC					12~80			
Speed Range 转速范围	RPM					2000~4000			
Weight 重量	Kg	0.4	0.4	0.8	0.8	1.1	1.1	1.3	1.3

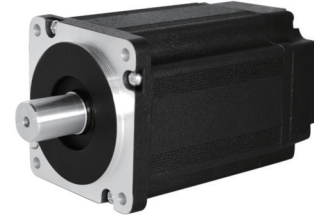
Dimensions in mm



60BSA Series

General Specification

Winding type 绕组连接方式	Delta
Hall effect angle 霍尔分布角度	120 Deg. Electrical angle
Radial play 径向间隙	0.025mm /460g
End play 轴向间隙	0.025mm /400g
Max. radial force 径向最大承受力	220N(20mm from the flange)
Max. axial force 轴向最大承受力	60N
Insulation class 绝缘等级	B
Dielectric strength 介电强度	500VDC for one minute,5mA
Insulation resistance 绝缘电阻	50M Ω min., 500VDC



Performance Data

Model 型号	Units	60BSA072B 010X-01	60BSA072B 030X-01	60BSA092B 010X-01	60BSA092B 030X-01	60BSA114B 010X-01	60BSA114B 030X-01	60BSA134B 010X-01	60BSA134B 030X-01
Number of poles 极数		8							
Number of phase 相数		3							
Rated voltage 额定电压	VDC	24							
Rated speed 额定转速	RPM	1000	3000	1000	3000	1000	3000	1000	3000
Continuous stall torque 持续堵转转矩	N.m	0.38	0.38	0.78	0.78	1.2	1.2	1.56	1.56
Rated torque 额定转矩	N.m	0.32	0.32	0.65	0.65	1	1	1.3	1.3
Rated power 额定功率	W	33.5	100	68	204	105	314	136	408
Peak torque 峰值扭矩	N.m	0.96	0.96	1.95	1.95	3	3	3.9	3.9
Peak current 峰值电流	A	6	17.9	12.2	36.5	18.8	56	24.3	73
Torque constant 转矩常数	Nm/A	0.16	0.054	0.16	0.054	0.16	0.054	0.16	0.054
Back E.M.F 反电势	V/KRPM	17.14	6	17.14	6	17.14	6	17.14	6
Rotor inertia 转动惯量	g.cm ²	70	70	140	140	210	210	280	280
Body length 电机长度	mm	72	72	92	92	114	114	134	134
Voltage range 电压范围	VDC	12~310							
Speed Range 转速范围	RPM	1000~3000							
Weight 重量	Kg	0.55	0.55	0.95	0.95	1.35	1.35	1.75	1.75

Dimensions in mm

